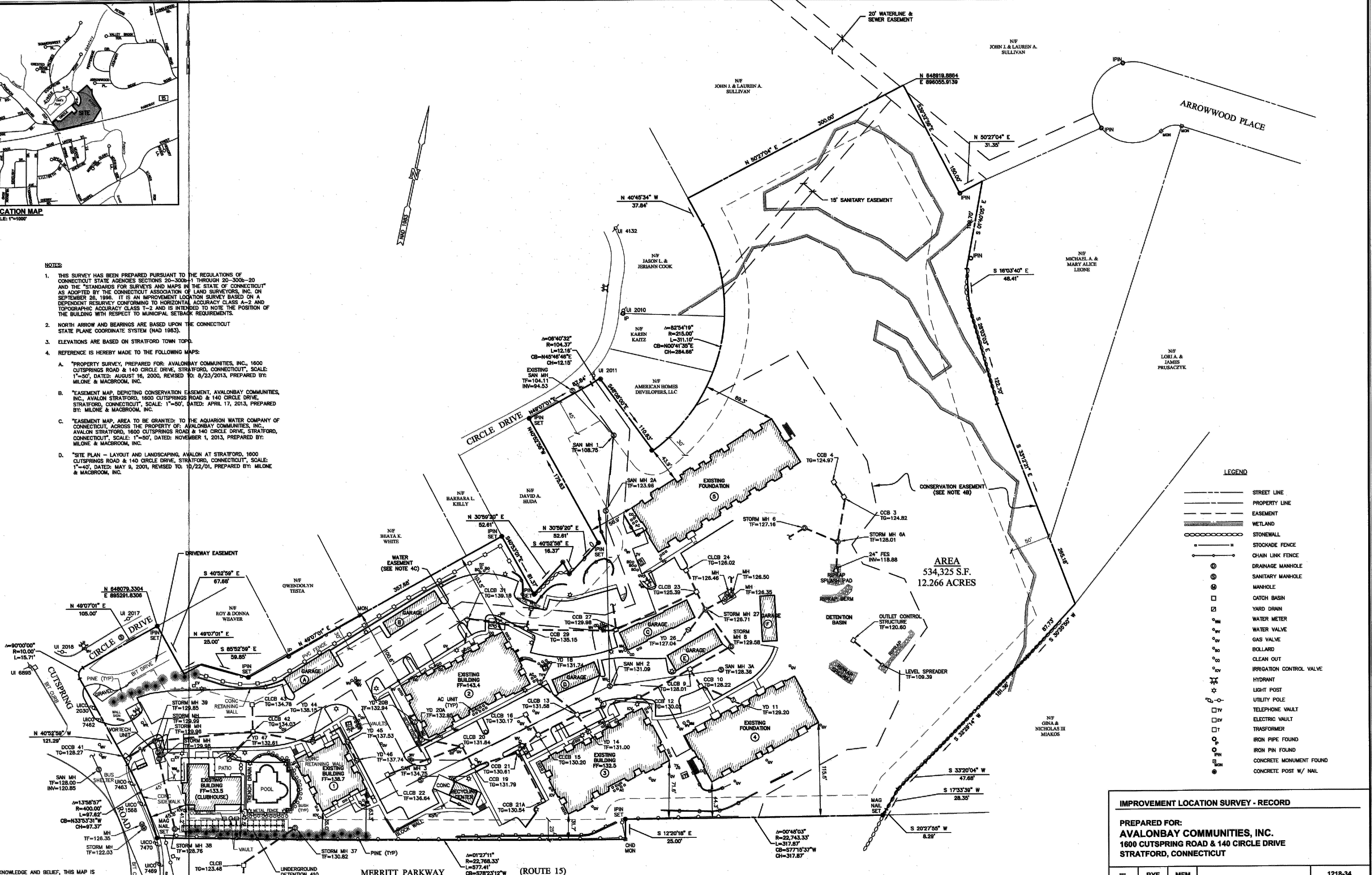
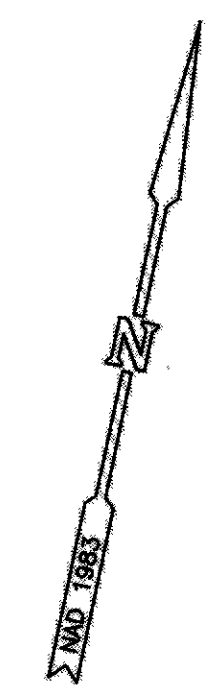


LOCATION MAP
SCALE: 1"=1000'

NOTES

- THIS SURVEY HAS BEEN PREPARED PURSUANT TO THE REGULATIONS OF CONNECTICUT STATE AGENCIES SECTIONS 20-300b THROUGH 20-300b-20 AND THE "STANDARDS FOR SURVEYS AND MAPS IN THE STATE OF CONNECTICUT" AS ADOPTED BY THE CONNECTICUT ASSOCIATION OF LAND SURVEYORS, INC. ON SEPTEMBER 28, 1996. IT IS AN IMPROVEMENT LOCATION SURVEY BASED ON A DEPENDENT RESURVEY CONFORMING TO HORIZONTAL ACCURACY CLASS A-2 AND TOPOGRAPHIC ACCURACY CLASS T-2 AND IS INTENDED TO NOTE THE POSITION OF THE BUILDING WITH RESPECT TO MUNICIPAL SETBACK REQUIREMENTS.
- NORTH ARROW AND BEARINGS ARE BASED UPON THE CONNECTICUT STATE PLANE COORDINATE SYSTEM (NAD 1983).
- ELEVATIONS ARE BASED ON STRATFORD TOWN TOPO.
- REFERENCE IS HEREBY MADE TO THE FOLLOWING MAPS:
 - "PROPERTY SURVEY, PREPARED FOR: AVALONBAY COMMUNITIES, INC., 1600 CUTSPRING ROAD & 140 CIRCLE DRIVE, STRATFORD, CONNECTICUT", SCALE: 1"=50', DATED: AUGUST 16, 2000, REVISED TO: 8/23/2013, PREPARED BY: MILONE & MACBROOM, INC.
 - "EASEMENT MAP, DEPICTING CONSERVATION EASEMENT, AVALONBAY COMMUNITIES, INC., AVALON STRATFORD, 1600 CUTSPRING ROAD & 140 CIRCLE DRIVE, STRATFORD, CONNECTICUT", SCALE: 1"=50', DATED: APRIL 17, 2013, PREPARED BY: MILONE & MACBROOM, INC.
 - "EASEMENT MAP, AREA TO BE GRANTED: TO THE AQUARIUM WATER COMPANY OF CONNECTICUT, ACROSS THE PROPERTY OF: AVALONBAY COMMUNITIES, INC., AVALON STRATFORD, 1600 CUTSPRING ROAD & 140 CIRCLE DRIVE, STRATFORD, CONNECTICUT", SCALE: 1"=50', DATED: NOVEMBER 1, 2013, PREPARED BY: MILONE & MACBROOM, INC.
 - "SITE PLAN - LAYOUT AND LANDSCAPING, AVALON AT STRATFORD, 1600 CUTSPRING ROAD & 140 CIRCLE DRIVE, STRATFORD, CONNECTICUT", SCALE: 1"=40', DATED: MAY 9, 2001, REVISED TO: 10/22/01, PREPARED BY: MILONE & MACBROOM, INC.



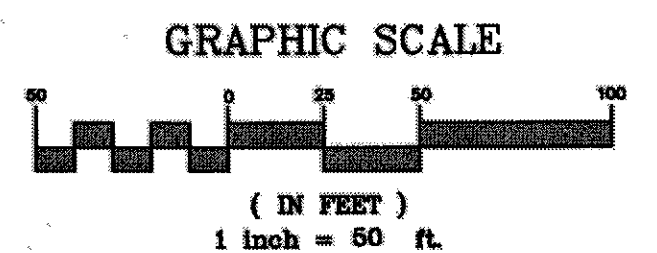
AREA
534,325 S.F.
12.266 ACRES

- LEGEND
- STREET LINE
 - PROPERTY LINE
 - - - EASEMENT
 - WETLAND
 - STONEWALL
 - STOCKADE FENCE
 - CHAIN LINK FENCE
 - ⊙ DRAINAGE MANHOLE
 - ⊙ SANITARY MANHOLE
 - ⊙ MANHOLE
 - ⊙ CATCH BASIN
 - ⊙ YARD DRAIN
 - ⊙ WATER METER
 - ⊙ WATER VALVE
 - ⊙ GASS VALVE
 - ⊙ BOLLARD
 - ⊙ CLEAN OUT
 - ⊙ IRRIGATION CONTROL VALVE
 - ⊙ HYDRANT
 - ⊙ LIGHT POST
 - ⊙ UTILITY POLE
 - ⊙ TELEPHONE VAULT
 - ⊙ ELECTRIC VAULT
 - ⊙ TRANSFORMER
 - ⊙ IRON PIPE FOUND
 - ⊙ IRON PIN FOUND
 - ⊙ CONCRETE MONUMENT FOUND
 - ⊙ CONCRETE POST W/ NAIL

IMPROVEMENT LOCATION SURVEY - RECORD

PREPARED FOR:
AVALONBAY COMMUNITIES, INC.
1600 CUTSPRING ROAD & 140 CIRCLE DRIVE
STRATFORD, CONNECTICUT

DESIGNED BY	RYE	MFM	1218-34
DRAWN			CHECKED
SCALE	1"=50'		
DATE	DECEMBER 11, 2013		
REVISED: 7/22/14 REVISED: 6/18/14 REVISED: 5/8/14 REVISED: 4/28/14 REVISED: 2/26/14			MILONE & MACBROOM 99 Realty Drive Cheshire, Connecticut 06410 (203) 271-1773 Fax (203) 272-9733 www.MiloneandMacBroom.com
			1 OF 1



TO MY KNOWLEDGE AND BELIEF, THIS MAP IS SUBSTANTIALLY CORRECT AS NOTED HEREON.

Robert A. Jackson, Jr.

ROBERT A. JACKSON, JR.
L.S. #1347